

4-wheel electric tow tractor

TE80

Towing Capacity 8000 Kg

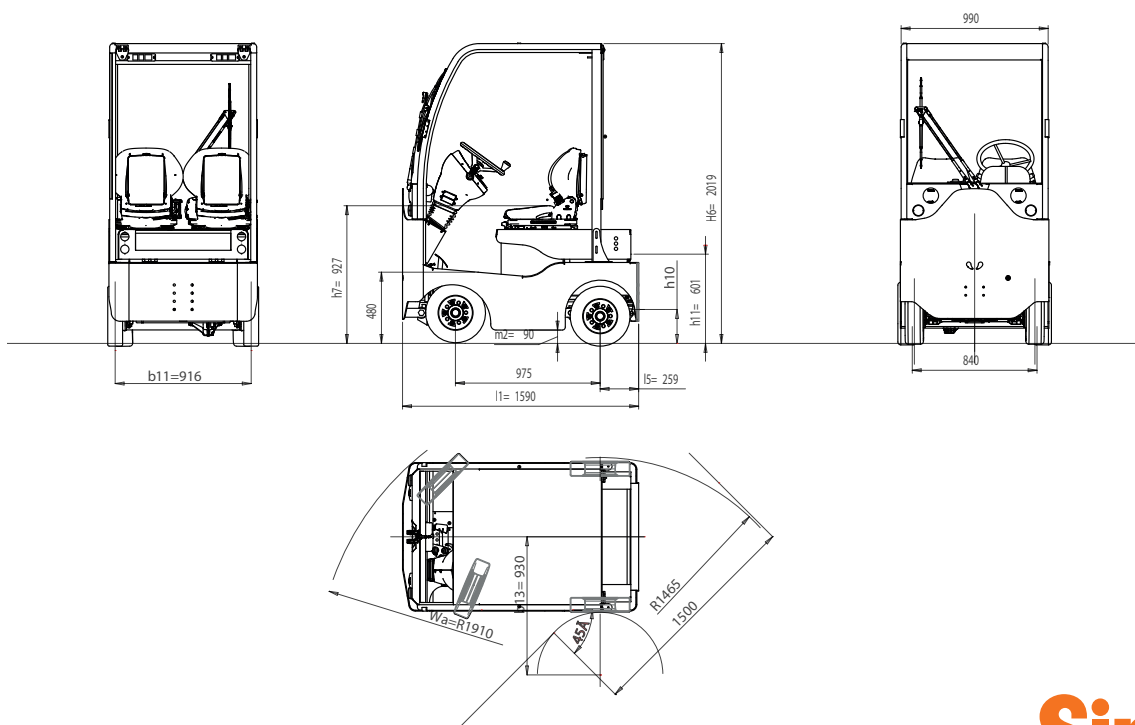


4-wheel tow tractor, man on board, with rear-wheel drive. Extremely compact and easy to drive, ideal for all industrial duties - both indoors and outdoors, even on long distances. Loading capacity of rear platform 100 kg.

- “Shock resistant” **supporting perimeter chassis** ensures maximum exploitation of induction motor torque.
- **Complete automotive lighting** and signal system. Led lights.
- **Suspensions: rubberised steel coil springs in the front, steel coil springs with shock absorbers in the rear.**
- **Drum service brake** acting on 4 wheels with twofold braking system. Electromagnetic parking brake. Preset electrical **braking**, operating automatically when accelerator pedal is released, with first stroke of brake pedal and on reversing direction.
- **Mechanical steering. Hydraulic steering available upon request.**
- **1 operator on board.** Optimised driving position for maximum comfort and efficiency as well as user-friendly and ergonomic dashboard. Passenger seat available upon request.
- **“Man on board” device** with seat occupancy sensor. Available in basic version, with weather protection roof with front windscreen and electric wipers. PVC canvas doors or cab with hinged side doors available.

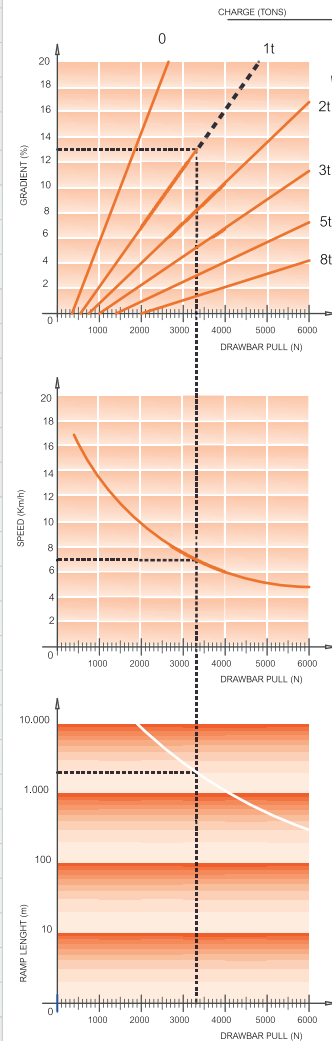
- **Lighting system:** 2 front lights (dipped-beam/main-beam), 2 front turn indicators, 2 rear turn indicators, 2 rear lights (position/brake lights). Full LED technology. Horn. Flashing light, reversing light and blue lights available upon request
- **Digital dashboard** with battery charge indicator, fault detection, speedometer and hour meter. 24 V DC/DC converter for auxiliary services.
- **Induction motor** equipped with encoder, thermal probes and negative electromagnetic parking brake with manual brake disengage lever.
- **Electronic speed control of AC motor** with energy recovery during deceleration and braking. Several towing hitches available. Rear inching control to ease coupling operations.
- **Battery** DIN 43531A 48 V - available capacity 315Ah, 345Ah and 375Ah. Standard paint finish: chassis dark grey RAL 7021/body light grey RAL 7035. Other colours available upon request.

All parts are easy to access for fast and effective maintenance. Lower costs due to AC technology and modular design.



FEATURES	1.1	Manufacturer			SIMAI S.p.A.
	1.2	Model			TE80
	1.3	Drive			Electric
	1.4	Operator Type			Sitting driver
	1.5	Load Capacity	Q	t	0,1
	1.5.1	Towing Capacity	Q	t	8
	1.7	Rated Drawbar pull	F	N	1900
	1.9	Wheelbase	Y	mm	975
	WEIGHT	2.1	Service weight (w/battery)		Kg
2.2		Axle loading laden front/rear (with operator 80 kg. each)		Kg	614 / 795
2.3		Axle loading unladen front/rear		Kg	585 / 645
TIRES, CHASSIS	3.1	Tyres:Cushion(Cu),Superelastic(SE), Pneus(Pn) Poliurethane (PE)			SE/Pn
	3.2	Tyre size front			4.00-8
	3.3	Tyre size rear			4.00-8
	3.5	Wheels nr. Front/Rear (X=motive)			2/2X
	3.6	Tread front	b_{10}	mm	810
	3.7	Tread rear	b_{11}	mm	912
	DIMENSIONS	4.7	Height of roof/cabin	h_6	mm
4.8		Seat height	h_7	mm	1010
4.8.1		Step on platform height		mm	500
4.12		Coupling height	h_{10}	mm	265 - 320 - 375
4.13		Loading height (min / MAX)	h_{11}	mm	600
4.16		Platform length	l_3	mm	350
4.17		Rear overhang	l_5	mm	258
4.18		Platform width	b_9	mm	650
4.19		Overall length	l_1	mm	1595
4.21		Overall width	b_1	mm	1000
4.32		Ground clearance - centre of wheelbase	m_2	mm	105
4.35		Turning radius front	W_a	mm	1910
4.35.1		Turning radius rear		mm	1465
4.36		Turning radius inner	b_{13}	mm	930
4.36.1		Aisle width when turning 90°		mm	1500
PERFORMANCES	5.1	Travel speed laden/unladen		Km/h	9 / 16
	5.5	Drawbar pull laden		N	-
	5.5.1	Drawbar pull unladen		N	1900
	5.6	Max. Drawbar pull laden/unladen		N	- / 6200
	5.7	Gradeability laden/unladen		%	See chart
	5.8	Max. Gradeability laden/unladen		%	See chart
	5.10	Service / Parking brake (I=Hydraulic E=Electromagn. M=Mechanical)			I / E
5.10.1	Type of service brake front/rear			Drum / drum	
MOTOR	6.1	Drive motor rating S2=60 min		kW	5
	6.1.1	Hydrauling steering motor rating S2=60 min		kW	0,55
	6.3	Battery according to DIN 43531 / 35 / 36 A, B, C, no			43531 A
	6.4	Battery voltage	U	V	48
	6.4.1	Battery rated capacity	K_5	Ah	315 - 345 - 375
	6.5	Battery weighth		Kg	536 - 550 - 580
	6.6	Energy consumption (VDI cycle)		kWh/h	-
OTHER DATA	8.1	Drive Control			Inverter AC
	8.4	Sound level at driver's ear according to DIN 12053		dB(A)	69
	8.5	Towing coupling, type DIN			-

READING EXAMPLE:
 CHARGE = 1 TONS
 GRADIENT = 13 %
 DRAWBAR PULL = 3330 N
 SPEED = 7 Km/h
 MAX PRACTICABLE RAMP LENGTH = 2000 m



As per VDI guidelines 2198, this datasheet applies to standard electric tractor / platform truck only

Dimensions are not binding and can be changed in any moment. The performances must be intended for brand new machines, after having completed the running-in tested in San Donato Milanese Factory in normal climatic conditions. Performances and weight are to be intended with standard motors and battery (reported in bold) and with pneumatic tires. Some data can vary according to different equipments.

Simai S.p.A.

Via Civesio, 10 • 20097 S. Donato Milanese (MI) • Italy
 T +39 02 5278541 • F +39 02 5278544 • info@simai.it • www.simai.it



Simai

0372E0418