

## 4-wheel electric tow tractor

# TE80IXB

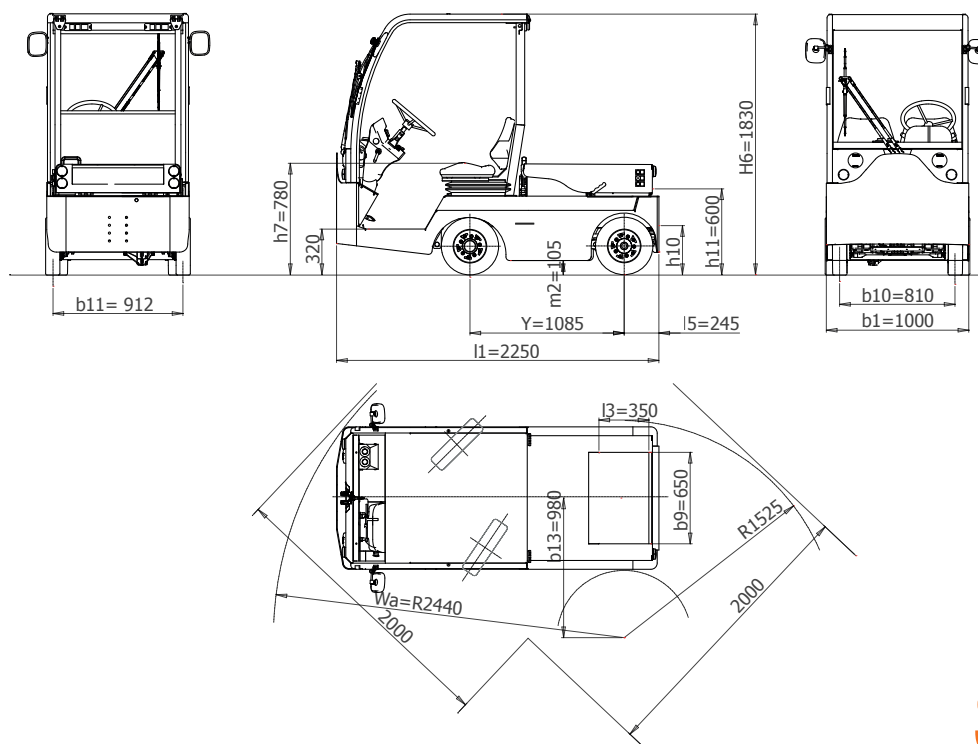
Towing capacity 8000 kg



4-wheel tow tractor, man on board, with rear-wheel drive. Extremely easy to drive, ideal for all duties - both indoors and outdoors. Ideal solution whenever the operator has to get off frequently for hooking and unhooking operations. Loading capacity of rear platform 100 kg.

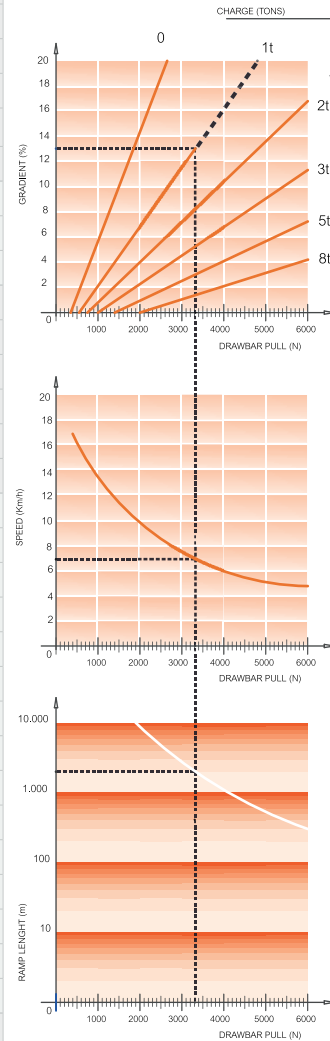
- "Shock resistant" **supporting perimeter chassis** ensures maximum exploitation of induction motor torque.
- **Suspensions:** rubberised steel coil springs in the front, steel coil springs with shock absorbers in the rear.
- **Drum service brake** acting on 4 wheels with twofold braking system. Electromagnetic parking brake. Preset electrical **braking**, operating automatically when accelerator pedal is released, with first stroke of brake pedal and on reversing direction.
- Standard hydraulic **steering**.
- **1 operator on board.** Optimised driving position for maximum comfort and efficiency, low step-on platform for comfortable access as well as user-friendly and ergonomic dashboard. Passenger seat available upon request.
- **"Man on board" device** with seat occupancy sensor. Available in basic version, with weather protection roof with front windscreen and electric wipers. PVC canvas doors or cab with hinged or sliding side doors available. Height with weather protection roof/cab max. 1790 mm.
- **Lighting system:** 2 front lights (dipped-beam/main-beam), 2 front turn indicators, 2 rear turn indicators, 2 rear lights (position/brake lights). Full LED technology. Horn. Flashing light, reversing light and blue lights available upon request
- **Digital dashboard** with battery charge indicator, fault detection, speedometer and hour meter. 24 V DC/DC converter for auxiliary services.
- **Induction motor** equipped with encoder, thermal probes and negative electromagnetic parking brake with manual brake disengage lever.
- **Electronic speed control of AC motor** with energy recovery during deceleration and braking. Several towing hitches available. Rear inching control to ease coupling operations.
- **Battery** DIN 43531A 48 V – available capacity 315Ah, 345Ah and 375Ah. Battery fitted behind driving position for fast replacement from above. Standard paint finish: chassis dark grey RAL 7021/body light grey RAL 7035. Other colours available upon request.

All parts are easy to access for fast and effective maintenance. Lower costs due to AC technology and modular design.



FEATURES	1.1	Manufacturer				SIMAI S.p.A.	
	1.2	Model				TE80IXB	
	1.3	Drive				Electric	
	1.4	Operator Type				Sitting driver	
	1.5	Load Capacity	Q	t		0,1	
	1.5.1	Towing Capacity	Q	t		8	
	1.7	Rated Drawbar pull	F	N		1900	
	1.9	Wheelbase	Y	mm		1070	
	WEIGHT	2.1	Service weight (w/battery)				Kg
2.2		Axle loading laden front/rear (with operator 80 kg. each)				Kg	745 / 690
2.3		Axle loading unladen front/rear				Kg	650 / 605
TIRES, CHASSIS	3.1	Tyres:Cushion(Cu),Superelastic(SE), Pneus(Pn) Poliurethane (PE)					SE/Pn
	3.2	Tyre size front					4.00-8
	3.3	Tyre size rear					4.00-8
	3.5	Wheels nr. Front/Rear (X=motive)					2/2X
	3.6	Tread front	$b_{10}$	mm			810
	3.7	Tread rear	$b_{11}$	mm			912
	DIMENSIONS	4.7	Height of roof/cabin	$h_6$	mm		
4.8		Seat height	$h_7$	mm			780
4.8.1		Step on platform height		mm			320
4.12		Coupling height	$h_{10}$	mm			265 - 320 - 375
4.13		Loading height (min / MAX)	$h_{11}$	mm			600
4.16		Platform length	$l_3$	mm			350
4.17		Rear overhang	$l_5$	mm			255
4.18		Platform width	$b_9$	mm			650
4.19		Overall length	$l_1$	mm			2250
4.21		Overall width	$b_1$	mm			1000
4.32		Ground clearance - centre of wheelbase	$m_2$	mm			105
4.35		Turning radius front	Wa	mm			2440
4.35.1		Turning radius rear		mm			1525
4.36		Turning radius inner	$b_{13}$	mm			980
4.36.1		Aisle width when turning 90°		mm			2000
PERFORMANCES	5.1	Travel speed laden/unladen				Km/h	9 / 16
	5.5	Drawbar pull laden				N	-
	5.5.1	Drawbar pull unladen				N	1900
	5.6	Max. Drawbar pull laden/unladen				N	- / 6200
	5.7	Gradeability laden/unladen				%	See chart
	5.8	Max. Gradeability laden/unladen				%	See chart
	5.10	Service / Parking brake (I=Hydraulic E=Electromagn. M=Mechanical)					I / E
	5.10.1	Type of service brake front/rear					drum / drum
MOTOR	6.1	Drive motor rating S2=60 min				kW	5
	6.1.1	Hydrauling steering motor rating S2=60 min				kW	0,55
	6.3	Battery according to DIN 43531 / 35 / 36 A, B, C, no					43531 A
	6.4	Battery voltage	U	V			48
	6.4.1	Battery rated capacity	$K_5$	Ah			315 - 345 - <b>375</b>
	6.5	Battery weighth		Kg			536 - 550 - <b>580</b>
	6.6	Energy consumption (VDI cycle)		kWh/h			-
OTHER DATA	8.1	Drive Control					Inverter AC
	8.4	Sound level at driver's ear according to DIN 12053				dB(A)	69
	8.5	Towing coupling, type DIN					-

READING EXAMPLE:  
 CHARGE = 1 TONS  
 GRADIENT = 13 %  
 DRAWBAR PULL = 3330 N  
 SPEED = 7 Km/h  
 MAX PRACTICABLE RAMP LENGTH = 2000 m



As per VDI guidelines 2198, this datasheet applies to standard electric tractor / platform truck only.

Dimensions are not binding and can be changed in any moment. The performances must be intended for brand new machines, after having completed the running-in tested in San Donato Milanese Factory in normal climatic conditions. Performances and weight are to be intended with standard motors and battery (reported in bold) and with pneumatic tires. Some data can vary according to different equipments.

**Simai S.p.A.**

Via Civesio, 10 • 20097 S. Donato Milanese (MI) • Italy

T +39 02 5278541 • F +39 02 5278544 • info@simai.it • www.simai.it



**Simai**

037E0418